



OPEN ACCESS

Use of a smart lip holder for minimally invasive minor salivary gland biopsy

Alexandre Dumusc,¹ Bettina Bannert,² Florian Kollert,³
Jorge Álvarez-Troncoso,⁴ Thomas Hügle¹

¹Rheumatology, Lausanne University Hospital, Lausanne, Switzerland

²Rheumatology, University Hospital Basel, Basel, Switzerland

³Rheumatology, Inselspital University Hospital Bern, Bern, Switzerland

⁴Unidad de Enfermedades Autoinmunes Sistémicas, Hospital Universitario La Paz, Madrid, Spain

Correspondence to

Professor Thomas Hügle, Rheumatology, Lausanne University Hospital, Lausanne 1011, Switzerland; thomas.hugle@chuv.ch

Received 21 July 2020

Revised 9 November 2020

Accepted 10 November 2020

Published Online First

16 December 2020



Check for updates

© Author(s) (or their employer(s)) 2021. Re-use permitted under CC BY-NC. No commercial re-use. See rights and permissions. Published by BMJ.

To cite: Dumusc A, Bannert B, Kollert F, et al. *BMJ Innov* 2021;**7**:445–447.

INTRODUCTION

Sjögren's syndrome (SS) is a chronic autoimmune condition with a prevalence of up to 1%.¹ Salivary gland biopsy showing focal lymphocytic sialadenitis (focus score of ≥ 1) is required to fulfil the classification criteria for SS in seronegative patients, which is the case in up to 30%.² Salivary gland biopsy is also an important tool to diagnose or exclude other systemic diseases causing sicca symptoms, such as sarcoidosis, amyloidosis, Mikulicz's disease or IgG4-related disease. So far, there has been no standard technique for salivary gland biopsy. Minor salivary gland biopsy (MSGB) of the lower lip is widely used due to its low invasiveness, and has a sensitivity ranging from 63% to 93% and a specificity of >90% reported in most studies.³ In contrast to biopsy of the parotid gland, fascial nerve damage does not occur in MSGB. Yet it can lead to transient local paraesthesia of the lower lip in up to 11% of the interventions, at least when including different techniques regarding length and direction of incision or punch biopsy.⁴ Newer, less invasive techniques applying transcutaneous pressure manually or using devices such as adapted chalazion forceps⁵ reduce permanent neurological complications to 0.1%.^{6,7} In a study, using a needle tip for vertical mucosal incision and dissection of the glands along with pressure applied from the sides by the operator showed better results than the more invasive elliptical incision.⁸

MSGB is commonly performed by two operators, one providing assistance to hold the lip with or without pressure and the main operator performing local anaesthesia, mucosal incision and extraction of the glands. In this retrospective study

Summary box

What are the new findings?

- ▶ We describe a novel instrument that permits a rapid and safe minor salivary gland biopsy in cases of suspected Sjögren's syndrome or other diseases.

How might it impact on healthcare in the future?

- ▶ Minor salivary gland biopsy can be performed by a single person
- ▶ The intervention is less invasive and more rapid
- ▶ No neurological complications such as numbness were observed

we characterise the use of a novel disposable device to facilitate MSGB in routine practice.

METHODS

We retrospectively studied 28 consecutive adult patients with clinically suspected SS who underwent MSGB using Saliclick (Curmed, Switzerland) between August 2018 and March 2020. We also studied 22 patients who underwent MSGB during this period without the device. In this case, transcutaneous pressure was performed by a second person after receiving instructions.

The clamp is a single-use device produced by three-dimensional printing and injection moulding subsequently. The technical use of the device is described in the Results section. We recorded the demographics of the patients, the side of the biopsy, the number of incisions, sample surface and the number of lobuli when possible. We also assessed if the quality of the sample was sufficiently useful for clinical decision making. We noted any use of

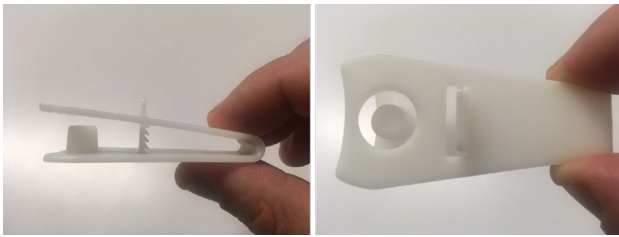


Figure 1 Saliclick lip holder.

stitches and any occurrence of complication, notably transient or persistent numbness, bleeding or infection.

RESULTS

Procedure

Local anaesthesia of the lower lip was performed in all cases before the intervention. **Figure 1** shows the device in the form of a disposable two-leg clamp with teeth-row sparing concave distal ends to be placed on the lower lip. A stamp is located on the lower leg with an opposite notch. A locking mechanism is situated in the middle of the device to allow application of constant transcutaneous pressure on the lower lip. In all 28 interventions the clamp was locked in the first grid with acceptable pressure for the patients and with sufficient pressure to provoke protrusion of the salivary glands after incision. The procedure is shown step by step in **figure 2**. A video of a representative procedure is seen in the following link: <https://vimeo.com/chuv/review/436329329/644f692d5e>.

Table 1 Patient characteristics and technical outcome after MSGB using the clamp

	N=28
Age at time of biopsy (years), mean (SD)	47.7 (15.3)
Female, n (%)	26 (93)
Anti-SSA autoantibody positive, n (%)	6 (21)
Right side biopsied, n (%)	13 (46)
Assistance needed, n (%)	0
Quality of sample adequate for clinical decision, n (%)	25 (89)
Salivary glands obtained on first incision, n (%)	25 (89)
Contralateral incision needed	3 (11)
Surface of the sample (mm ²), mean (SD)*	4.4 (1.4)
Number of glands obtained, n, mean (SD)†	2.1 (1.0)
Complication, n (%)	2 (8)
Fainting	1
Haematoma	1
Neurological	0

*Data available for 4 patients.

†Data available for 18 patients.

Anti-SSA, anti-Sjögren's-syndrome-related antigen A autoantibodies; MSGB, minor salivary gland biopsy.

Outcomes

MSGB was performed by two operators (AD, TH). The characteristics and procedure outcomes of patients who underwent MSGB using the device are summarised in **table 1**. All MSGB procedures were performed during a 30 min routine clinic slot in outpatient clinic boxes. All MSGB procedures were performed by the operator alone without assistance. The mean sample surface was 4.4 mm². For three patients, no glands were obtained

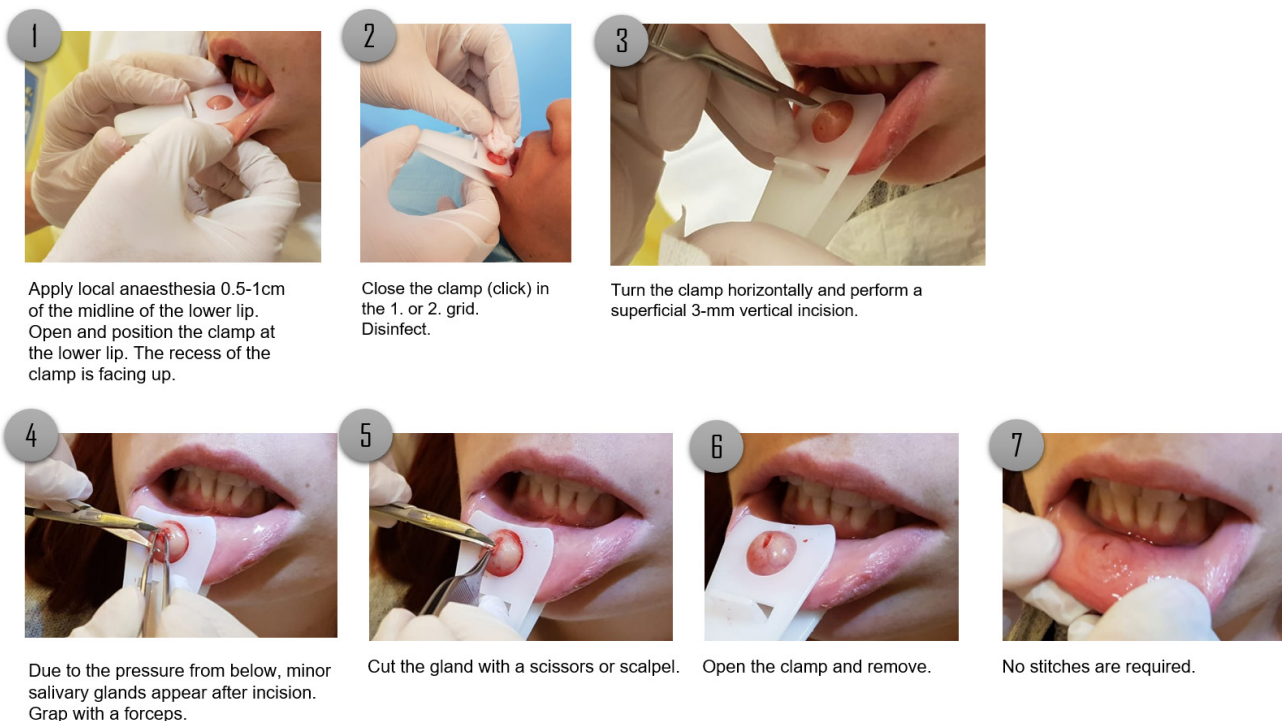


Figure 2 Step-by-step procedure of minor salivary gland biopsy using the Saliclick lip holder.

on the first incision. The biopsy was repeated on the contralateral side with success in all three cases. In 89% of the cases the biopsy was conclusive and useful in the diagnosis or exclusion of SS. Alternative diagnoses such as amyloidosis or sarcoidosis were not reported. Complications occurred in two patients; one patient fainted, and the procedure had to be suspended for several minutes and resumed afterwards. Local haematoma was observed in the second patient. No neurological complications occurred; notably no hypoesthesia (or numbness) was reported. We found no difference between the intervention group using the clamp and the control group with an assisting person in terms of size. In the control group, one patient fainted and the procedure has been temporarily suspended.

DISCUSSION

MSGB is a cornerstone in the diagnosis of SS. In this study we showed that a novel, self-locking clamp with a stamp can be used to perform MSGB safely and rapidly by a single person and thus is feasible to be integrated into a normal clinical consultation. Tissue yield and pathological assessment were comparable with results from other studies.⁶ We experienced mild haematoma in one patient, but notably no transitory or persistent numbness of the lower lip. We postulate that by transcutaneous pressure, incisions are more superficial than in other techniques, particularly as compared with punch biopsy. The duration of the procedure was not longer using the device when compared with the standard procedure including an assisting person, and yielded a similar number of glands. We observed less frequent bleeding during the procedure with the device compared with the standard procedure, even with patients under antiplatelet agents, and we postulate a haemostatic effect of the clamp through the applied pressure. Despite the technical advance in salivary gland biopsy, recent articles indicate that patients with SS may have negative biopsy results.⁹ Of note, other clinical criteria including ocular symptoms must be present in SS and should be investigated thoroughly. The recommendations for standardisation of labial salivary gland histopathology in clinical trials propose assessment of at least four labial salivary glands, with a surface of at least 8 mm².¹⁰ Given the mean surface of 4.4 mm² obtained in this study, at least two mucosal incisions are necessary if this device is used for clinical trials. In patients with suspected Mikulicz's disease or lymphoma, submandibular gland biopsy has shown a higher diagnostic utility than MSGB and might be preferable.¹¹

In conclusion we observed that the use of this device allows performance of MSGB without assistance, has good-quality outcomes and is not associated with neurological complication due to low invasiveness.

Contributors TH: development of the clamp, study design, biopsy and analysis, performance of biopsy, manuscript preparation. AD, BB, FK, JA-T: study design and analysis, performance of biopsy, manuscript preparation.

Funding The authors have not declared a specific grant for this research from any funding agency in the public, commercial or not-for-profit sectors.

Competing interests TH developed the instrument and receives royalties.

Patient consent for publication Not required.

Provenance and peer review Not commissioned; externally peer reviewed.

Open access This is an open access article distributed in accordance with the Creative Commons Attribution Non Commercial (CC BY-NC 4.0) license, which permits others to distribute, remix, adapt, build upon this work non-commercially, and license their derivative works on different terms, provided the original work is properly cited, appropriate credit is given, any changes made indicated, and the use is non-commercial. See: <http://creativecommons.org/licenses/by-nc/4.0/>.

REFERENCES

- Maldini C, Seror R, Fain O, *et al.* Epidemiology of Primary Sjögren's Syndrome in a French Multiracial/Multiethnic Area. *Arthritis Care Res* 2014;66:454–63.
- Shiboski CH, Shiboski SC, Seror R, *et al.* 2016 American College of Rheumatology/European League against rheumatism classification criteria for primary Sjögren's syndrome: a consensus and data-driven methodology involving three international patient cohorts. *Ann Rheum Dis* 2017;76:9–16.
- Guellec D, Cornec D, Jousse-Joulin S, *et al.* Diagnostic value of labial minor salivary gland biopsy for Sjögren's syndrome: a systematic review. *Autoimmun Rev* 2013;12:416–20.
- Morbini P, Manzo A, Caporali R, *et al.* Multilevel examination of minor salivary gland biopsy for Sjögren's syndrome significantly improves diagnostic performance of AECG classification criteria. *Arthritis Res Ther* 2005;7:R343–8.
- López-Jornet P, Bermejo-Fenoll A. [A simple technique for accessory salivary gland biopsy]. *Ann Dermatol Venereol* 2005;132:166–7.
- Varela Centelles P, Sánchez-Sánchez M, Costa-Bouzas J, *et al.* Neurological adverse events related to lip biopsy in patients suspicious for Sjögren's syndrome: a systematic review and prevalence meta-analysis. *Rheumatology* 2014;53:1208–14.
- Varela-Centelles P, Seoane-Romero J-M, Sánchez-Sánchez M, *et al.* Minor salivary gland biopsy in Sjögren's syndrome: a review and introduction of a new tool to ease the procedure. *Med Oral Patol Oral Cir Bucal* 2014;19:e20–3.
- Lee WY, Choi Y-S, Ahn S-H, *et al.* A convenient and less invasive technique of labial minor salivary gland biopsy using a minimal incision with a needle tip. *Clin Exp Otorhinolaryngol* 2014;7:222–5.
- Sharma R, Chaudhari KS, Kurien BT, *et al.* Sjögren syndrome without focal lymphocytic infiltration of the salivary glands. *J Rheumatol* 2020;47:394–9.
- Fisher BA, Jonsson R, Daniels T, *et al.* Standardisation of labial salivary gland histopathology in clinical trials in primary Sjögren's syndrome. *Ann Rheum Dis* 2017;76:1161–8.
- Moriyama M, Furukawa S, Kawano S, *et al.* The diagnostic utility of biopsies from the submandibular and labial salivary glands in IgG4-related Dacryoadenitis and sialoadenitis, so-called Mikulicz's disease. *Int J Oral Maxillofac Surg* 2014;43:1276–81.